

## SPECIFICATION

### DIAN HORIZON [60.5M AHTS / 5150 BHP / DP1]

#### General

Type of Vessel	AHTS DP1 / FIFI 1
Flag	Indonesian
Place & Year Built	China, 2014

#### Principal Particulars

Length overall	60.50 m
Length waterline	58.17 m
Length between perpendiculars	55.00 m
Breadth moulded	14.60 m
Depth moulded	5.50 m
Draft moulded	4.50 m
Gross tonnage	1555
Trial speed (@ 100% MCR)	13.5 knots
Static Bollard Pull (@ 100% MCR)	about 65 Tonnes
Class	BV & BKI
Notation	Class 1 + Hull + MACH "Supply Vessel, Fire Fighting Ship, Water Spraying + DYMAPOS AM/AT" Unrestricted Navigation

#### Cargo capacities

Deadweight @ 4.5m draft	1400 Tonnes
Deck loading	7.0 Tonnes/m <sup>2</sup>
Clear deck area	370 m <sup>2</sup>
Fuel oil	520 m <sup>3</sup>
Fresh water	213 m <sup>3</sup>
Water ballast/Drill water	460 m <sup>3</sup>
Mud	260 m <sup>3</sup>
Dry Bulk Cement	187 m <sup>3</sup>
Foam	13 m <sup>3</sup>
Detergent	13 m <sup>3</sup>

#### Propulsion system

Main engine	2 x 2575 BHP Cat 3516C
Propulsion	Cop Berg open propeller
Generating set	2x450KW Cat C18
Shaft generator	2x900 KW shaft driven
Emergency generator	1x65KW Cat 4.4
Bow thruster/stern thruster	2x8.0T controllable pitch type
Steering gear	1 x electro-hydraulic

#### Pumps

Fuel oil cargo pump	1 x 150m <sup>3</sup> /hr @ 75m head
Fresh water cargo pump	1 x 100m <sup>3</sup> /hr @ 75m head
Drill Water pump	1 x 100m <sup>3</sup> /hr @ 75m head
Mud pump	2 x 70m <sup>3</sup> /hr @ 75m head

#### Deck Machinery

Anchor handling/towing winch	1 x 150 tonnes line pull Brake holding 200 tonnes
anchor windlass	1 electro-hydraulic type 9 tonnes at 12 m/min for 40mm dia. chain
Tuggers	2 x 10 tonnes @ 15m/min
Capstan	2 x 5 tonnes @ 15m/min
Shark jaw & Towing pins	Hydraulic operated type
Stern roller	S.W.L. 200 mt
Deck Crane	1 x 3T @14m

#### External Fire Fighting System

Fire pumps	2x1500 m <sup>3</sup> /hr at 13 Bar. driven by main engine front PTO.
Fire Monitors (water/foam)	Capacity:1200 m <sup>3</sup> /hr Inlet pressure:12 bar Throw length:20m Throw height:45m

#### Accommodation

2 x 1 - man cabins	2 men
4 x 2 - man cabins	8 men
8 x 4 - man cabins	32 men
Total	42 men
Hospital	1 man

#### Radio and Navigation Equipment

Radar	Furuno FR-2115
Radar	Furuno FR-1942 Mk-2
Echo Sounder	Furuno FE-700
DGPS	Furuno GP-90
Gyro Compass	Robertson RGC-11 or equal
Magnetic Compass	Saura MR-150 or equal
Autopilot	Raytheon NautoPilot NP60
Weather Facsimile Receiver	Furuno FAX-207
Doppler Speed Log	Furuno DS-80
AIS	Furuno FA-100
GMDSS	Furuno RT-1800T for A1-2-3 Areas C/W FS-1570 Synthesized SSB DSC-60 MF/HFDSC Felcom -15Inmarset-C Furuno FM-8500 VHF McMurdo E3 EPIRB 3 Icom GM-1500 VHF Handheld Furuno NX-500 Navtex Receiver

#### Dynamic Positioning System

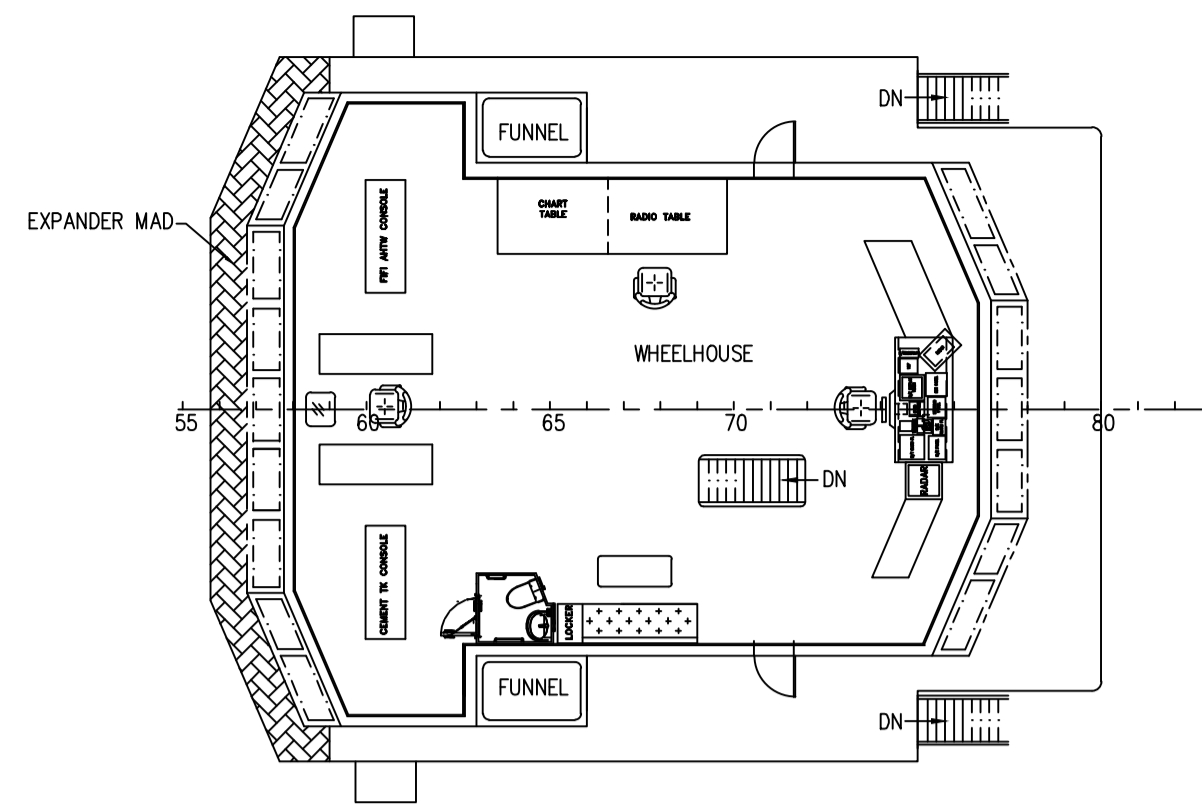
Basic System Hardware	configured or incorporated with: Two (2) position reference systems (DGPS) Two (2) wind sensors Two (2) Motion Reference Systems Two (2) gyro compasses One (1) UPS One (1) control station with two (2) computer systems of Joystick and DP system
-----------------------	---

#### Operational Modes

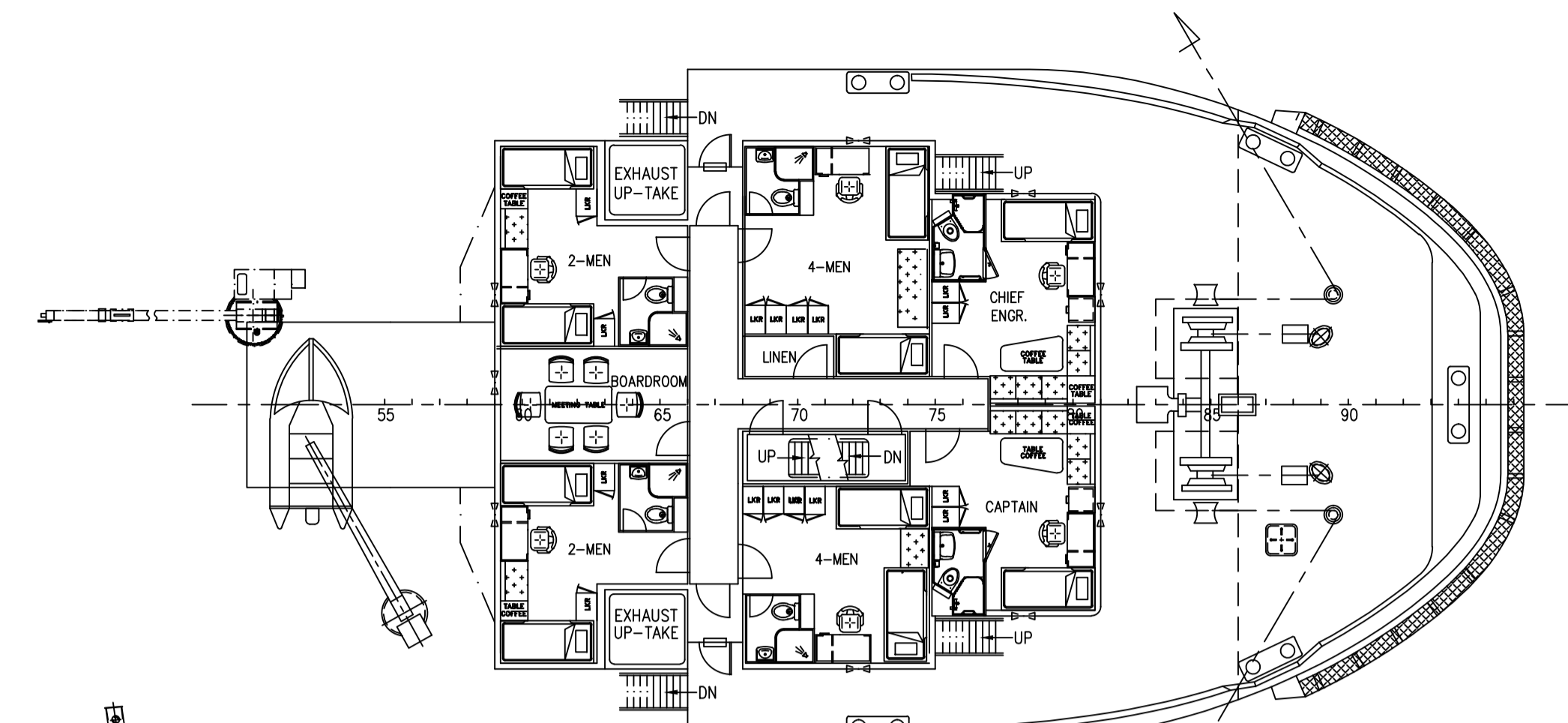
- Joystick mode
- Mixed Joystick / Auto mode
- Auto heading mode
- Auto position mode
- Autopilot mode

#### Miscellaneous

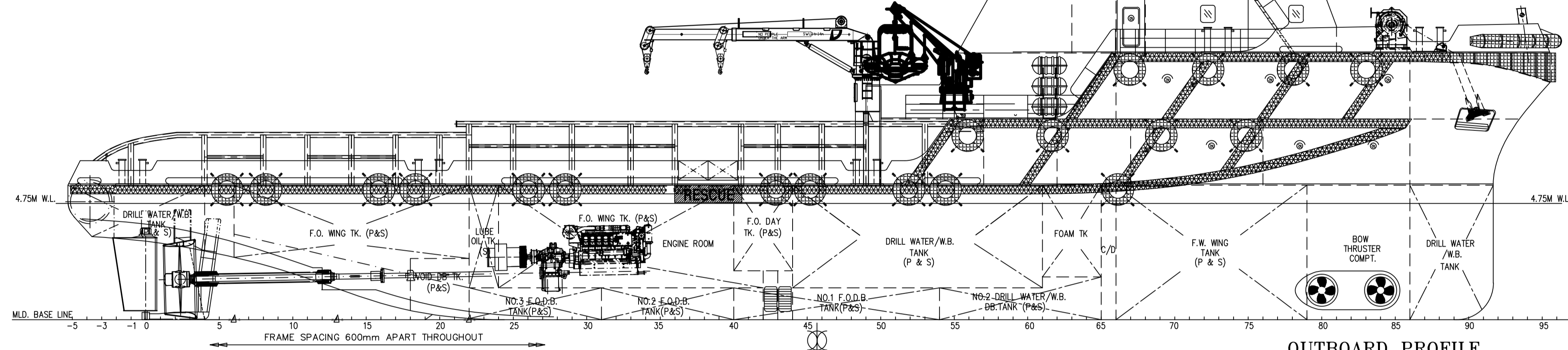
Life Raft	4x20 men and 2x25 men persons
Rescue Boat (1 set)	6 persons Rigid fire-resistant FRP type
Search Light	3 x 2,000 W
Floodlight	4 x 1,000 W
Oily Water Separator	1 x 1 m <sup>3</sup> /h
Fresh Water Maker	1 x 5 m <sup>3</sup> /day
Sewage Treatment Plant	1 x 42 men/day



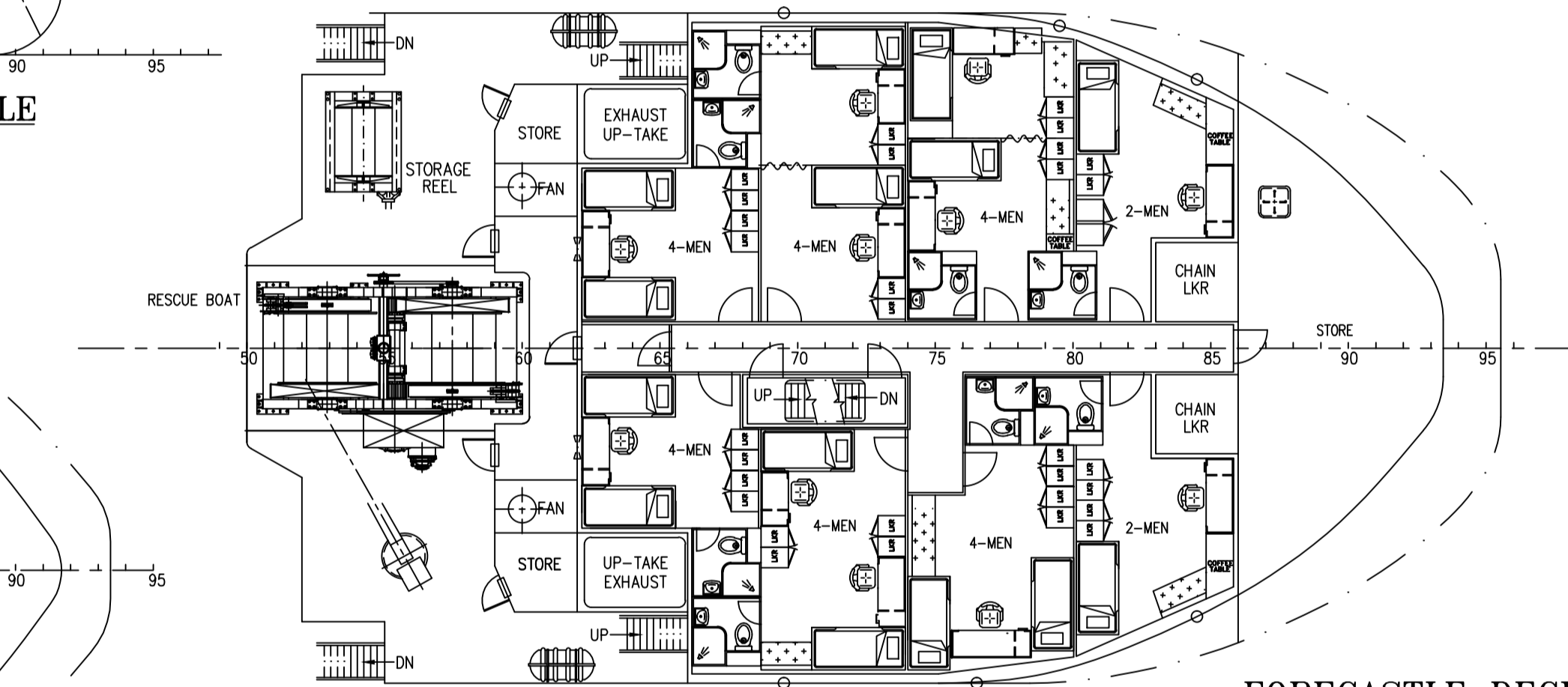
NAV. BRIDGE DECK



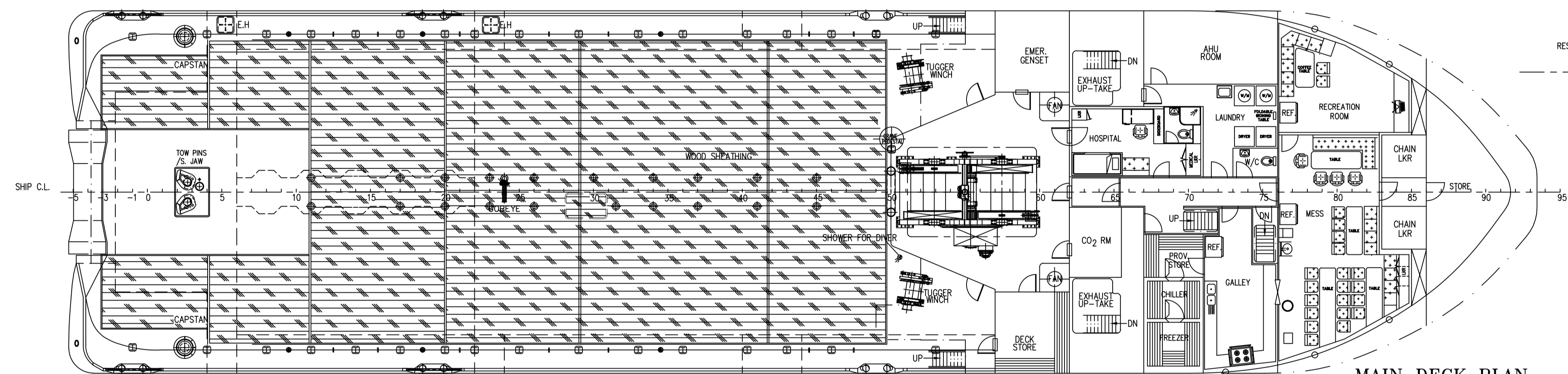
UPPER FORECASTLE DECK



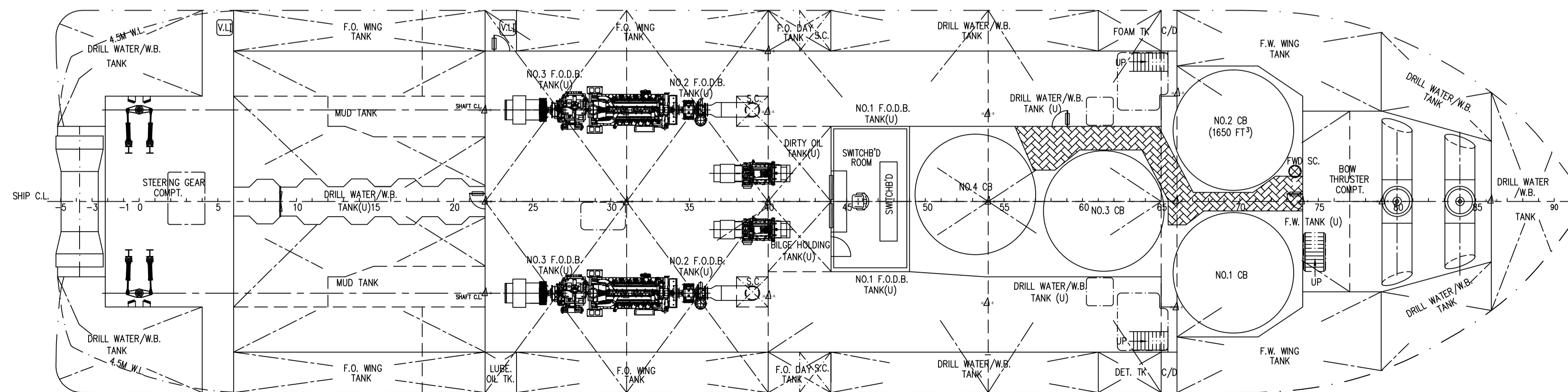
OUTBOARD PROFILE



FORECASTLE DECK



MAIN DECK PLAN



BELOW MAIN DECK PLAN

PRINCIPAL DIMENSIONS

LENGTH OVERALL	60.50 M
LENGTH WATERLINE	58.17 M
LENGTH BETWEEN PERPENDICULARS	55.00 M
BREADTH MOULDED	14.60 M
DEPTH MOULDED	5.50 M
MAX. DRAFT MOULDED	4.75 M
ACCOMMODATION	42 MEN
FUEL OIL	512 M <sup>3</sup>
FRESH WATER	215 M <sup>3</sup>
DRILL WATER	436 M <sup>3</sup>
MUD (S.G. - 2.5)	251 M <sup>3</sup>
DRY BULK TANKS(4 x 1650 FT <sup>3</sup> )	187 M <sup>3</sup>
CLEAR DECK AREA (DECK LOADING = 7 T/M <sup>2</sup> )	370 M <sup>2</sup>
TOTAL POWER	2 x 2575 BHP
BOLLARD PULL	65 TONNS
SPEED	13.5 KNOTS

THIS DOCUMENT AND THE INFORMATION IT CONTAINS IS COPYRIGHT AND REMAINS THE PROPERTY OF KHIAM CHUAN MARINE PTE LTD. IT IS NOT TO BE COPIED IN WHOLE OR IN PART OR DISCLOSED TO ANY THIRD PARTY FOR ANY PURPOSE WHATSOEVER WITHOUT PRIOR WRITTEN CONSENT.

ITEM	DETAILS OF MODIFICATION	BY	DATE
<p><b>KHIAM CHUAN MARINE PTE LTD</b>            15, HILLVIEW TERRACE, SINGAPORE 669226            TEL: 67753383 (6 LINES) FAX: 67753788            EMAIL: khiamchuan@kcm.com.sg</p>			
PROJECT: 60.5m ANCHOR HANDLING SUPPLY VESSEL			
TITLE: GENERAL ARRANGEMENT			
CLASSIFICATION		HULL NO. HT132201	
DRAWN	CHECKED	SCALE	DRAWING NUMBER
YUMINGYE		1:125	KCM/Q633(C)-G1
8-10-2013			REV.
			-