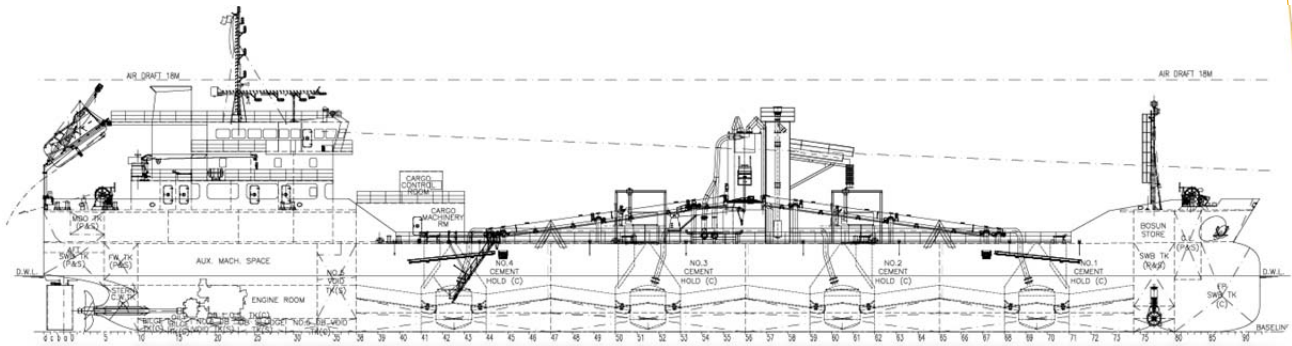




DBS
offshore marine services



6000T CARGO DEADWEIGHT SELF UNLOADING CEMENT CARRIER

6000T SELF UNLOADING CEMENT CARRIER



Equity Tower 43rd Floor Unit F-G SCBD Lot 9, JL Jend. Sudirman Kav. 52-53, Jakarta 12190, Indonesia.
| Tel: +6221-515 2330 | Web : www.dianbaharisejati.com | Fax: +6221-515 2331 |

GENERAL

Vessel Type	Cement Carrier
Flag / Port	Indonesia / Jakarta
Classification	ABS & BKI
Notation	✕ A1, (E) ✕ AMS (Cement Carrier)
Year Built	2016

PRINCIPAL PARTICULARS

Length Overall	108.40M
Length B.P.	106.60M
Beam	22.00M (Moulded)
Depth	7.90M (moulded)
Design Draft	5.00M
Air Draft	18.00M (Ballast Cond.)
Deadweight	6331.31 MT
Service Speed	Approx. 9.5knts (Full load at 85% MCR)

CARGO CAPACITIES

Cargo Capacity	6000T (4 holds)
Cargo Type	OPC 3200-4000 cm ² /g Blaine
Bulk Density	0.8-1.35 T/M ³
Max Temperature	80°C
Moisture	<0.5%
Cement System	Carlsen E3 Sys.
Mech. loading rate	up to 500t/hr
Pneu. loading rate	up to 500t/hr
Pneu. unloading rate	1 x 330t/hr
Mech. unloading rate	up to 500t/hr

MAIN MACHINERIES

Main Engine	1 x Yanmar 6EY26
Power	1 x 1920kW @ 750rpm
Propeller	1 x Fixed Pitch Propeller
Rudder	1 x High Lift Rudder
Bow Thruster	1 x 5T FPP
Genset	2 x 800kW (Yanmar) 1 x 500kW (Yanmar) 380V/3ph/50Hz
Emergency Gen.	1 x 280kW (Cummins)

TANK CAPACITIES (100%)

No.1 Cement Hold	1128.02M ³ (est.)
No.2 Cement Hold	1290.27M ³ (est.)
No.3 Cement Hold	1308.01M ³ (est.)
No.4 Cement Hold	1282.52M ³ (est.)
Heavy Fuel Oil	266.86M ³ (est.)
Marine Diesel Oil	47.62M ³ (est.)
Fresh Water	63.54M ³ (est.)
Ballast Water	4270.92M ³ (est.)

ACCOMMODATION

All cabins fitted with ensuite toilet/shower

Single Cabin	2 units
Double Cabin	5 units
4 men Cabin	2 units
Total Compliment	20 men

Common Spaces

1 x Galley
1 x Mess Room and 1 x Duty Mess
1 x Laundry
1 x Recreation Room
1 x Changing Room
1 x Provision Store, Chiller and Freezer

DECK EQUIPMENT AND FITTINGS

Fwd Windlass/Mooring	Windlass - 10.6T x 9m/min Mooring – 6T x 15m/min c/w warping head
Aft Mooring Winch	2 x double drum 6T x 15m/min c/w warping head
Hose Crane	2 x 1.5 ton @ 6m (S.W.L)
Provision Crane	1 x 1 ton @ 10m (S.W.L)

NAVIGATION & COMMS

Complies with GMDSS Area A1, A2, A3 for unrestricted Navigation and in accordance to flag state requirement.

FIRE FIGHTING & SAFETY

Complies with SOLAS and in accordance to flag state requirement.

Vessel under construction, all details are believed to be correct but not guaranteed