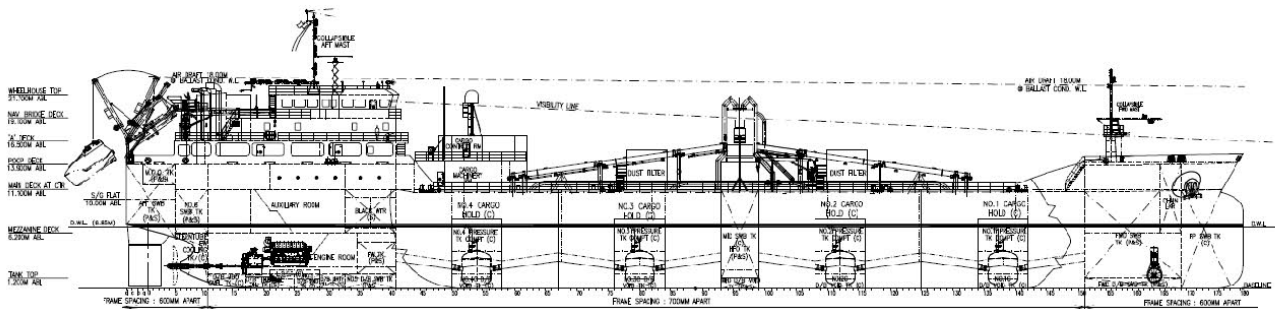




**DBS**  
offshore marine services



**MV DIAN PROSPERITY**  
9000T CARGO DEADWEIGHT  
**SELF UNLOADING CEMENT CARRIER**

# 9000T SELF UNLOADING CEMENT CARRIER

Equity Tower 43rd Floor Unit F-G SCBD Lot 9, JL Jend. Sudirman Kav. 52-53, Jakarta 12190, Indonesia.  
| Tel: +6221-515 2330 | Web : www.dianbaharisejati.com | Fax: +6221-515 2331 |



## GENERAL

Vessel Type	Cement Carrier
Flag / Port	Indonesia / Jakarta
Classification	Lloyds Register & BKI
Notation	☒100A1, ☒LMC, IWS
	Cement Carrier
Year Built	2016
Call Sign	YBMZ2
MMSI	525 117 001
IMO Number	9778375

## PRINCIPAL PARTICULARS

Length Overall	124.70M
Length B.P.	122.30M
Beam	20.00M (Moulded)
Depth	10.80M (moulded)
Design Draft	6.85M
Air Draft	18.00M (Ballast Cond.)
Deadweight	9,408.02 MT
Service Speed	Approx. 9.5knts (Full load at 85% MCR)

## CARGO CAPACITIES

Cargo Capacity	9000T (4 holds)
Cargo Type	OPC 3200-4000 cm <sup>2</sup> /g Blaine
Bulk Density	0.8-1.35 T/M <sup>3</sup>
Max. Temperature	80°C
Moisture	<0.5%
Cement System	H.W.Carlsen Sys.
Mech. loading rate	Approx. 500 t/hr
Pneu. loading rate	Approx. 500 t/hr
Pneu. loading trucking	12 Line 4" JIS10K
Pneu. unloading rate	Min. 500 t/hr (2 Line) (w/ max.250 m vertical 40 m number of elbow is 5 points)

## MAIN MACHINERIES

Main Engine	1 x Yanmar 8EY26W
Power	1 x 2560kW@750rpm
Propeller	1 x Fixed Pitch Propeller
Rudder	1 x High Lift Rudder
Bow Thruster	1 x 5T FPP
Genset	2 x 900kW (Yanmar) 1 x 700kW (Yanmar) 380V/3ph/50Hz
Emergency Gen.	1 x 280kW (Cummins)

## TANK CAPACITIES (100%)

No.1 Cement Hold	1974.115 M <sup>3</sup>
No.2 Cement Hold	2038.624 M <sup>3</sup>
No.3 Cement Hold	2038.615 M <sup>3</sup>
No.4 Cement Hold	2038.612 M <sup>3</sup>
Heavy Fuel Oil	479.60 M <sup>3</sup>
Marine Diesel Oil	80.50 M <sup>3</sup>
Fresh Water	110.60 M <sup>3</sup>
Ballast Water	5704.70 M <sup>3</sup>

## ACCOMMODATION

All cabins fitted with ensuite toilet/shower	
Single Cabin	20 Units
Double Cabin	2 Units
Total Compliment	22 Man
Common Space	
1 X Galley, Chiller, Freeze, Provision Store	
1 x Duty Mess, Mess Room	
2 x Recreation Room	
1 x Changing Room	
1 x Laundry Room	
1 x Hospital Room	

## DECK EQUIPMENT AND FITTINGS

Fwd Windlass/Mooring	Windlass - 11.0T x 10m/min Mooring – 8T x 15m/min
Aft Mooring Winch	2 x double drum 8T x 15m/min
Hose Handling Crane	2 x 1.5 ton @ 6m (S.W.L)
Provision Crane	1 x 1 ton @ 10m (S.W.L)

## NAVIGATION & COMMS

Complies with GMDSS Area A1, A2, A3 for unrestricted Navigation and in accordance to flag state requirement.

## FIRE FIGHTING & SAFETY

Complies with SOLAS and in accordance to flag state requirement.